

Implementation of a Web-Based Information Management System for Masjid Al-Mukhlisin

Muslim¹, Firman Santosa², Detri Amelia Chandra³, Ego Oktafanda⁴, Siti Zainab⁵

Program Studi Ilmu Komputer Universitas Rokania^{1,2,4}

Program Studi Pendidikan Teknologi Informasi Universitas Rokania³

Program Studi Peternakan Universitas Rokania⁵

Article Info

Article history:

Received July 26, 2022

Revised Agustus 06, 2022

Accepted November 13, 2022

Keywords:

Information System

Mosque Management

Web

ABSTRACT (10 PT)

Al-Mukhlisin Mosque is a mosque located in Rantau Panjang Village. The mosque has a function as a place of worship, therefore it can be found various religious activities such as paying Zakat Mal, Zakat Fitrah, Infak, Sacrifice, Islamic Holiday Celebration, cult (Seven Minute Lecture) in Ramadan, and so on and so forth. At this time the problem that exists in Al-Mukhlisin Mosque is that data recording is still using a manual method written in books and then recorded and making reports from the data that has been collected. And the mosque has difficulty in recapitulation and searching for data in the mosque if needed at any time because it uses a manual process. The design of the mosque management information system at Al-Mukhlisin Mosque aims to make it easier to manage and search for data and data recapitulation. This mosque information system is web-based using PHP program tools, databases, XAMPP, MYSQL.

This is an open access article under the CC BY-SA license.



Corresponding Author:

Muslim

Computer Science Program at Rokania University

Jl. Raya Pasir Pengaraian Km 15, Rokan Hulu, Riau, Indonesia

Email: muslim.ur.14@gmail.com

1. INTRODUCTION

The mosque serves as a place for worshipping and serving Allah [1]. Additionally, it functions as a center for activities among Muslims, such as celebrating religious holidays, conducting religious studies, and engaging in social activities like zakat (charity), infaq (voluntary giving), shodaqoh (alms-giving), and wakaf (endowment) [2]. Its role as a community center stems not only from its simple social context but also from its social management within, which serves as a social cohesive [3]. In the context of effective and professional management across various fields, adaptation to the evolving times is crucial [4]. Technology plays a pivotal role in addressing various challenges of modern management, particularly in today's dynamic and sophisticated information era. Websites serve as effective platforms for presenting information via the internet with interactivity that allows users to access various types of content such as text, images, audio, and video, as well as to connect with other documents through hyperlinks [5]. Through websites, access to necessary information can be obtained more easily and quickly [6].

Information Systems are frequently utilized across various sectors to streamline administrative tasks within an institution, including in religious contexts. For example, the management of zakat (alms) and infaq (charitable donations) at Masjid Al-Mukhlisin. Zakat is an obligation to give a portion of specific wealth to those who are entitled to receive it, according to religious teachings. Giving zakat means purifying one's soul,

self, and wealth from the rights of others over ownership, while also increasing the rewards earned [7]. Zakat fitrah, often referred to as the soul's zakat, is obligatory for every individual, including children and adults. Meanwhile, zakat mal, or wealth zakat, is compulsory when one's wealth reaches the nisab or the minimum amount of wealth specified [8].

Meanwhile, Infaq differs from zakat; Infaq is a form of donation that does not have a specific amount that must be given. Infaq greatly depends on financial capability and sincerity in giving, but the most important aspect is fulfilling the rights of others within our wealth [9]. Information systems related to data processing are crucial for institutions and organizations. Religious organizations also require information data processing, such as mosques. Currently, many mosques are competing to enhance services to mosque congregants through information, but many mosques still conduct all activities and transactions conventionally, which potentially lead to mistakes, errors, delays, and inefficiencies.

The management at Masjid Al-Mukhlisin is currently inefficient and ineffective. Data recording is still done manually, making the management inefficient and prone to errors. Data is recorded in books and then transferred into ledgers to generate reports. Mosque administrators have to manually compile data, which is time-consuming and susceptible to inaccuracies, misplaced booklets, and other issues. Additionally, the mosque faces difficulties in summarizing and retrieving data as needed due to the manual processes.

Given these challenges, it is necessary to develop an information management system for the mosque to address these issues. The aim of this system is to streamline data recording processes, making them faster, more efficient, and accurate. Furthermore, the system aims to simplify data management and retrieval, as well as facilitate report generation when needed. Therefore, the title of the research conducted is "Implementation of a Web-Based Information Management System for Masjid Al-Mukhlisin."

2. METHOD

Research methodology or scientific method is the procedure or steps in acquiring scientific knowledge or science. Therefore, research methodology is a systematic way to organize scientific knowledge [10]. The research framework is the stages that will be conducted in solving the problems that will be discussed. For more details, refer to Figure 2.1 below:

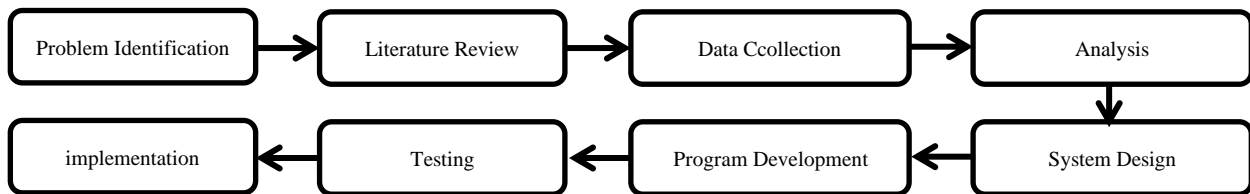


Figure 2.1. Research Framework

The steps of the research framework can be outlined as follows:

a. Problem Identification

The needs of the entire zakat and infaq information management system at Masjid Al-Mukhlisin must be identified. The first step in the research is to monitor, describe, and conclude to address the issues within the environment of Masjid Al-Mukhlisin, starting with direct observation on-site.

b. Literature Review

After identification, relevant literature related to the issues is studied. The literature reviewed is then selected to determine relevant journals, articles, and books that support the research.

c. Data Ccollection

Following the literature review, data collection is conducted to obtain necessary information to achieve the research objectives.

d. Analysis

Analysis is conducted to meet the researcher's system requirements for obtaining necessary information. After analyzing the issues, it is found that zakat and infaq data management is still carried out manually, which is deemed ineffective.

e. System Design

System design involves designing a system based on previous stages that adhere to system requirements and development effectively and efficiently, ensuring the resulting system meets the desired goals.

f. Program Development

Program development is based on the designed system to produce a system that meets the established requirements.

g. Testing

In designing the subsystem of the database management model, it includes a flowchart, context diagram, and data flow diagram (DFD). The processes within the information system of Masjid Al-Mukhlisin can be illustrated using a flowchart as follows:

a. Login Flowchart

This flowchart depicts the process from login to access the system. For a clearer view of the login flowchart, please refer to the following diagram.

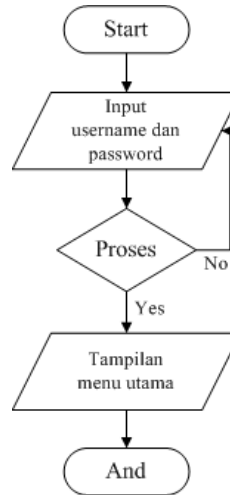


Figure 3.3. Login Flowchart

b. Main Menu Flowchart

This flowchart illustrates the process of the main menu. For a clearer view of the main menu flowchart, please refer to the following diagram.

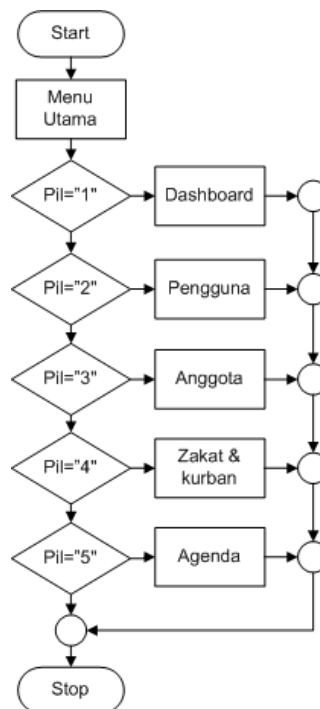


Figure 3.4. Main Menu Flowchart

c. User Menu Flowchart

This flowchart illustrates the process of the user menu. For a clearer view of the user menu flowchart, please refer to the following diagram.

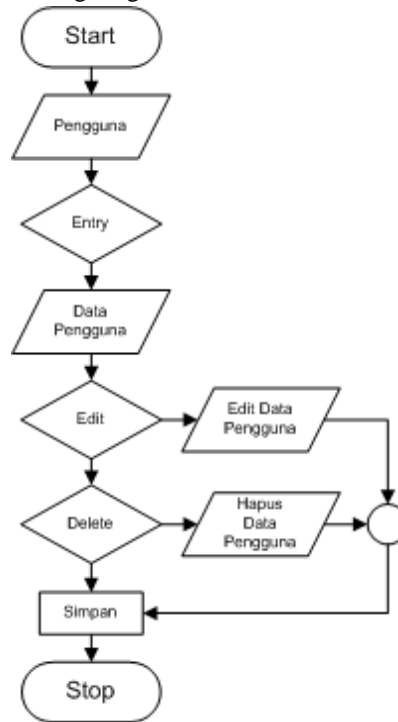


Figure 3.5. Flowchart Menu Pengguna

Below is the context diagram of the information system for Masjid Al-Mukhlisin.

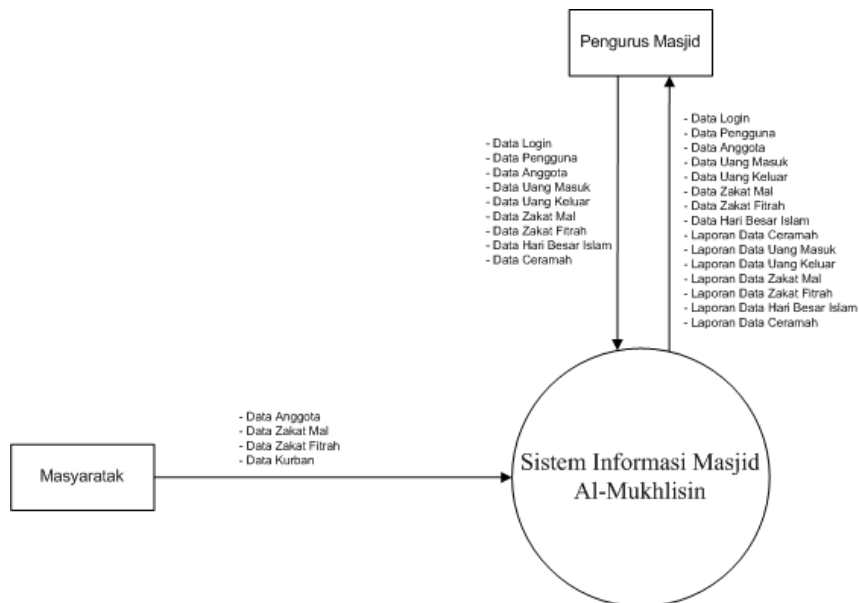


Figure 3.6. Context Diagram

In designing the database management subsystem, it includes the entity relationship diagram (ERD) and database table design. The following is an overview of the relationships between tables in the information system of Masjid Al-Mukhlisin.

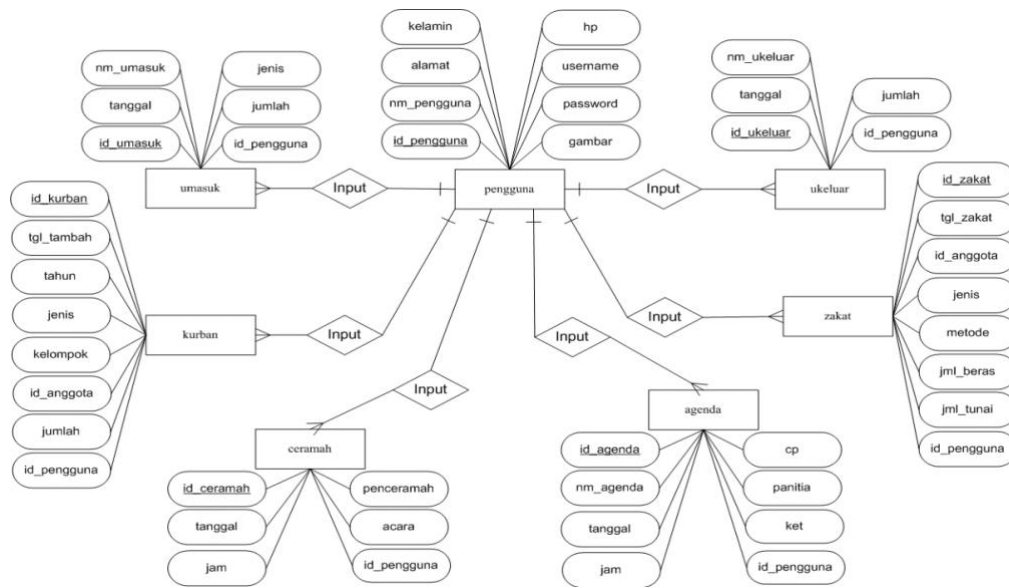


Figure 3.7. Entity Relationship Diagram (ERD)

The result of this research is a web-based information management system for Masjid Al-Mukhlisin, with the following interface:

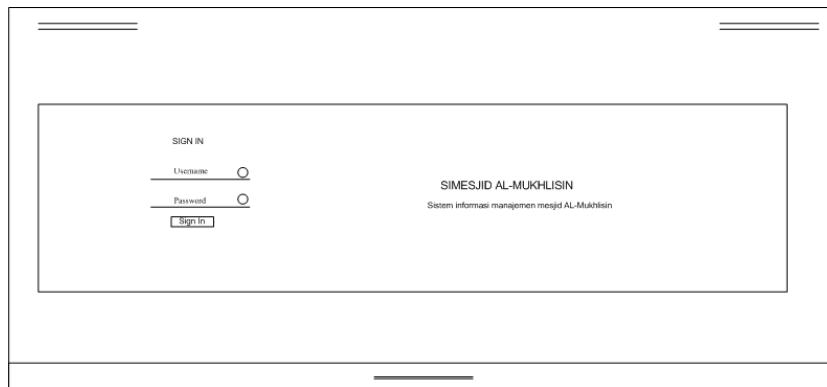


Figure 3.8. Design of the Login Interface

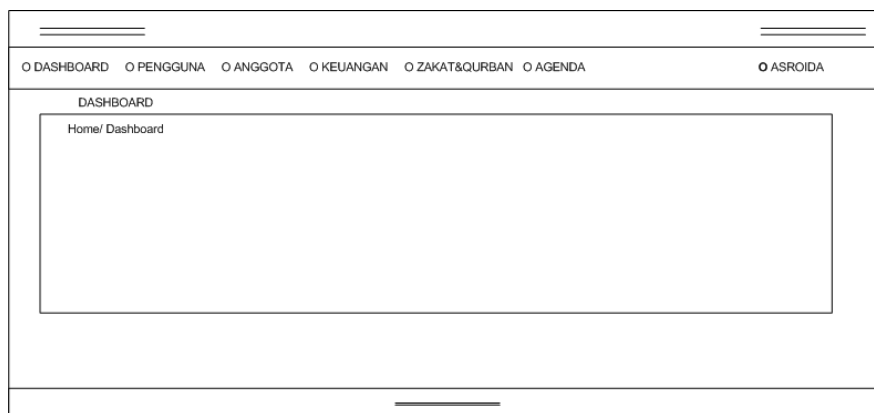


Figure 3.8. Design of the Dashboard Interface

4. CONCLUSION

Based on the problem formulation and objectives related to the Web-Based Information Management System for Masjid Al-Mukhlisin, it is developed for use by mosque administrators to manage the mosque more efficiently. Furthermore, for archiving purposes and reports provided to congregants to be more transparent.

- a. It is hoped that in the future, this system can be expanded by adding additional features or menus.
- b. It is expected that this system can be implemented and used optimally.





5. ACKNOWLEDGEMENTS

On this occasion, we would like to express our gratitude to the Research and Community Service Institution of University Rokania for the financial support provided in this research. We also extend our thanks to all parties who have contributed to the smooth implementation of this study.

REFERENCES

- [1] N. Marpaung, A. Nata, and R. Yesputra, "Pemanfaatan Aplikasi E-Masjid Sebagai Informasi Bagi BKM Al-Ikhlas," *Jurdimas (Jurnal Pengabdian Masyarakat) R.*, vol. 4, no. 3, pp. 301–306, 2021, doi: 10.33330/jurdimas.v4i3.1234.
- [2] A. Effendi and F. K. Mory, "Pemahaman Masyarakat Mengenai Perbedaan Antara Zakat, Infak, Sedekah dan Wakaf (ZISWAF) (Studi Kasus Di Nagari Tanjung Barulak Kecamatan Tanjung Emas)," *ZAWA Manag. Zakat Waqf J.*, vol. 1, no. 1, p. 57, 2021, doi: 10.31958/zawa.v1i1.3330.
- [3] K. Anam and H. Irawan, "Penerapan Sistem Informasi Manajemen Kegiatan Masjid Berbasis Web Pada Masjid Budi Luhur," *IDEALIS Indones. J. Inf. Syst.*, vol. 1, no. 3, pp. 300–306, 2018, [Online]. Available: <https://jom.fti.budiluhur.ac.id/index.php/IDEALIS/article/view/1259>
- [4] M. L. Sholihin, "Sistem Informasi Pembukuan Keuangan di Kelurahan Lalung," *J. Technol. Informatics*, vol. 2, no. 2, pp. 83–88, 2021, doi: 10.37802/joti.v3i1.139.
- [5] H. Hermansyah, S. Wahyuni, and A. Akbar, "Perancangan Sarana Media Informasi Berbasis Web Desa Klambir Lima Menggunakan Metode Waterfall," *JURIKOM (Jurnal Ris. Komputer)*, vol. 9, no. 2, p. 515, 2022, doi: 10.30865/jurikom.v9i2.3803.
- [6] A. Rochman, M. I. Hanafri, and A. Wandira, "Implementasi Website Profil SMK Kartini Sebagai Media Promosi dan Informasi Berbasis Open Source," *Acad. J. Comput. Sci. Res.*, vol. 2, no. 1, pp. 46–51, 2020, doi: 10.38101/ajcsr.v2i1.272.
- [7] J. Tambunan, "Memaksimalkan Potensi Zakat Melalui Peningkatan Akuntabilitas Lembaga Pengelola Zakat," *Islam. Circ.*, vol. 2, no. 1, pp. 118–131, 2021, doi: 10.56874/islamiccircle.v2i1.498.
- [8] S. Rizal, "Potensi dan efektivitas pengelolaan zakat fitrah," *J. Ekon. dan Bisnis*, vol. 9, no. 1, pp. 275–281, 2022.
- [9] S. Saprida and Z. F. Umari, "Manajemen Pengelolaan Zakat Di Desa Prambatan Kecamatan Abab Kabupaten Pali," *Islam. Bank. J. Pemikir. dan Pengemb. Perbank. Syariah*, vol. 7, no. 1, pp. 115–134, 2021, doi: 10.36908/isbank.v7i1.274.
- [10] Ms. Prof. Dr. Suryana, "Metodologi Penelitian : Metodologi Penelitian Model Praktis Penelitian Kuantitatif dan Kualitatif," *Univ. Pendidik. Indones.*, pp. 1–243, 2012, doi: 10.1007/s13398-014-0173-7.2.

BIOGRAPHIES OF AUTHORS

	<p>Muslim adalah Dosen Program Studi Ilmu Komputer, Universitas Rokania, Jalan Raya Pasir Pengaraian Km 15 Rokan Hulu, Riau 28557, Penelitiannya berfokus pada matematika terapan. Dapat dihubungi melalui email: muslim@rokania.ac.id.</p>
	<p>Firman Santosa adalah Dosen Program Studi Ilmu Komputer, Universitas Rokania, Jalan Raya Pasir Pengaraian Km 15 Rokan Hulu, Riau 28557, Penelitiannya berfokus pada Sistem Analisis, Database Managemen System, Data Mining, Internet of Think. Dapat dihubungi melalui email: firman@rokania.ac.id.</p>
	<p>Detri Amelia Chandra adalah Dosen Program Studi Teknologi Informasi Pendidikan, Universitas Rokania, Jalan Raya Pasir Pengaraian Km 15 Rokan Hulu, Riau 28557, Penelitiannya berfokus pada Sistem Analisis, Database Managemen System, Scaffolding dalam Pendidikan, Scientific literacy, project-based learning. Dapat dihubungi melalui email: detriamelia@rokania.ac.id.</p>
	<p>Ego Oktafanda adalah Dosen Program Studi Ilmu Komputer, Universitas Rokania, Jalan Raya Pasir Pengaraian Km 15 Rokan Hulu, Riau 28557, Penelitiannya berfokus pada Data Processing. Dapat dihubungi melalui email: egooktafanda@rokania.ac.id.</p>
	<p>Siti Zainab adalah Dosen Program Studi Peternakan, Universitas Rokania, Jalan Raya Pasir Pengaraian Km 15 Rokan Hulu, Riau 28557, Penelitiannya berfokus pada Integrated Sistem Peternakan dengan Teknologi Informasi. Dapat dihubungi melalui email: sitizainab@rokania.ac.id.</p>